

Emerald Bay Show Unit

Commercial Residential

Role: Project lead



Emerald Bay Show Unit

150 sqm, Johor, Malaysia, 2015

Role: Project Lead
Studio: Ministry of Design

The 3 bedroom show unit was for a new waterfront development in Johor centred around the newly developed Puteri Harbour marina. The intent was to create a cosy and breezy space, reminiscent of casual and fashionable waterfront lifestyle. This was achieved with an emphasis on natural materials and textures, and the colour palette found by the sea.

For this project, I was the lead designer involved from the beginning preparing the concept to construction presentation and technical drawing packages, space planning, working on the schematic design renders with the visualisation team, reviewing the FF&E selection, joinery and detail development and reviewing all technical drawings. Responsibilities include liaising with the client and consultant teams.

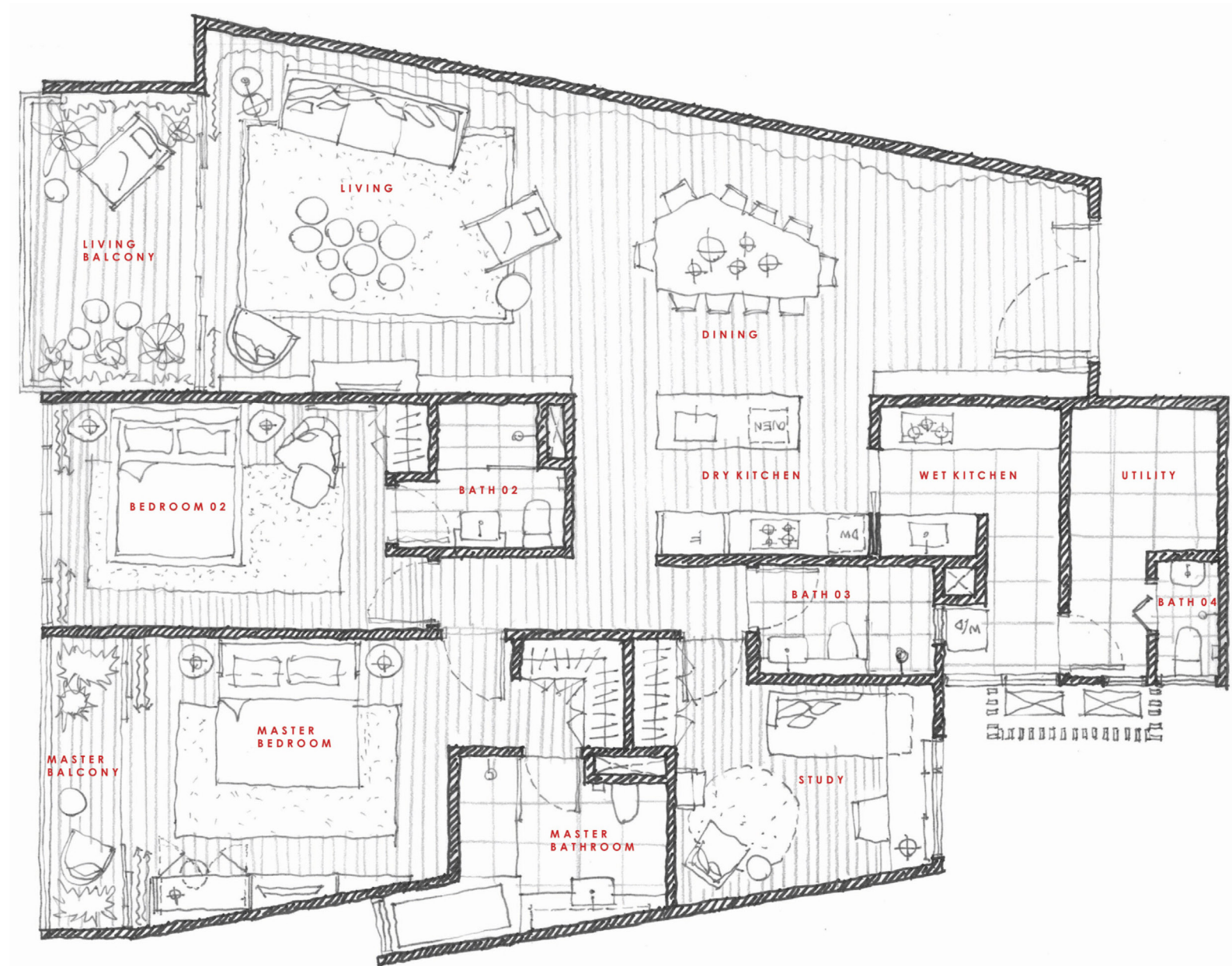


Emerald Bay Show Unit

150 sqm, Johor, Malaysia, 2015

Role: Project Lead

Studio: Ministry of Design



Description (clockwise from top left):

1. Hand sketched concept layout plan
2. Hand sketched sectional elevation through the Study, Master Bathroom and Master Bedroom

